

Portable Interactive Whiteboard 3.0 F-35



Description

F-35 is the latest version of Hi-vista portable interactive whiteboard series. According to feedbacks we got from our clients for 5 years, we finally launched this model to optimize the user's experience for teachers and students. With many new powerful advantages, it can greatly meet the market's requirements. As you can see, it's totally different from the other two versions, it will be the main promotional products of Hi-vista's portable IWB models.

Package Contents

| | | | | | | |
|-------------------------------------------------------------------------------------|------------------------------------------------------------------------------------|------------------------------------------------------------------------------------|------------------------------------------------------------------------------------|--------------------------------------------------------------------------------------|---------------------------------------------------------------------------------------|--------------------------------------------------------------------------------------|
|  |  |  |  |  |  |  |
| PIWB*1 | E-pen*1 | USB cable*1 | Charging Cable*1 | Instruction*1 | CD*1 | Magic Velcro *2 |

Outstanding Features



Smaller body, Powerful Interaction

Black and white colors for choices; Plastic shell, after highlighting process, it's more cute and exquisite; Can work with any projectors, no matter what brand, no matter what configuration, it can work perfectly to realize interactive function.

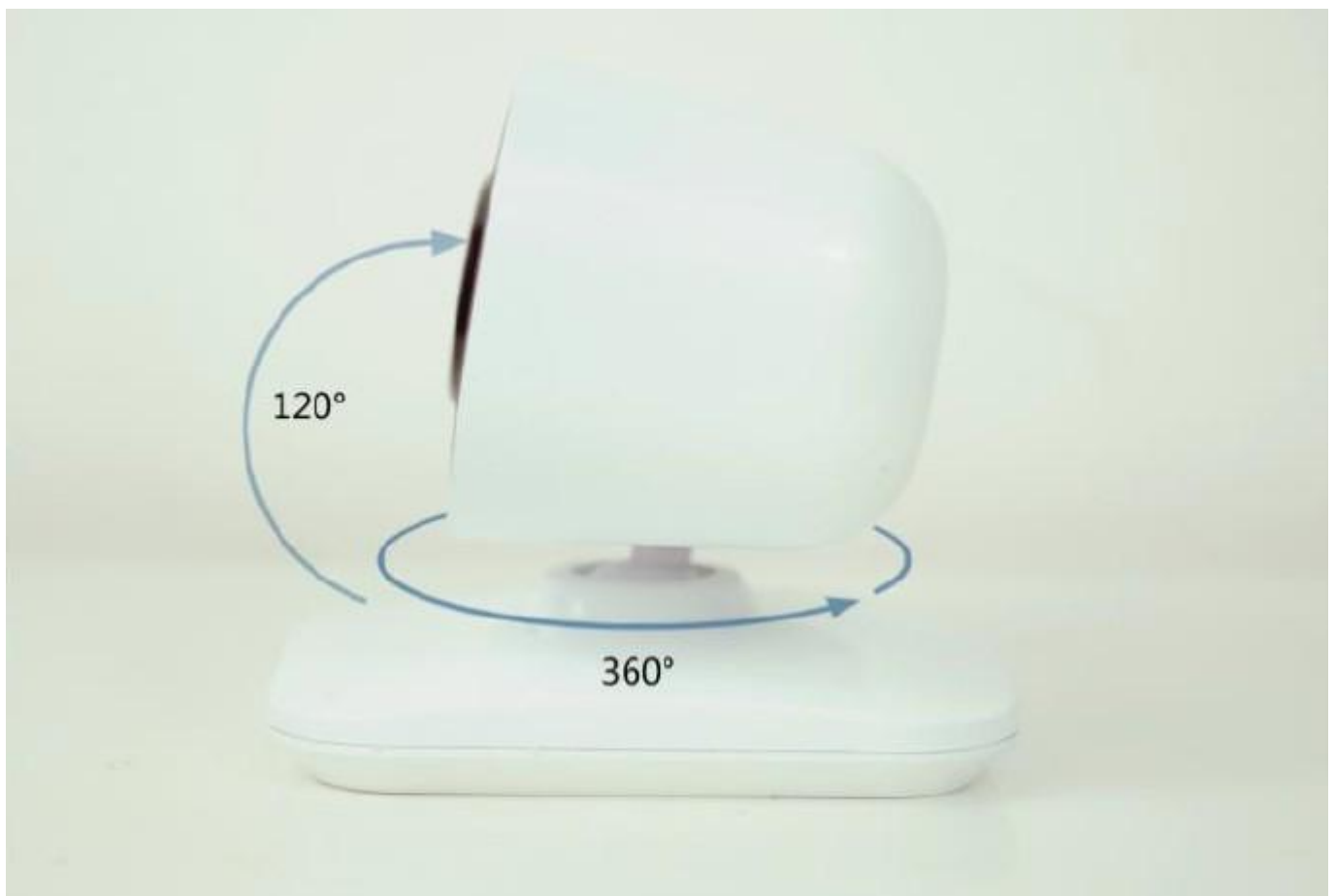
Magic Velcro, Newer Installation Way

Use 3M Velcro backing to fix the base directly on projector or desk, as long as the surface is flat, it also could be lifted.



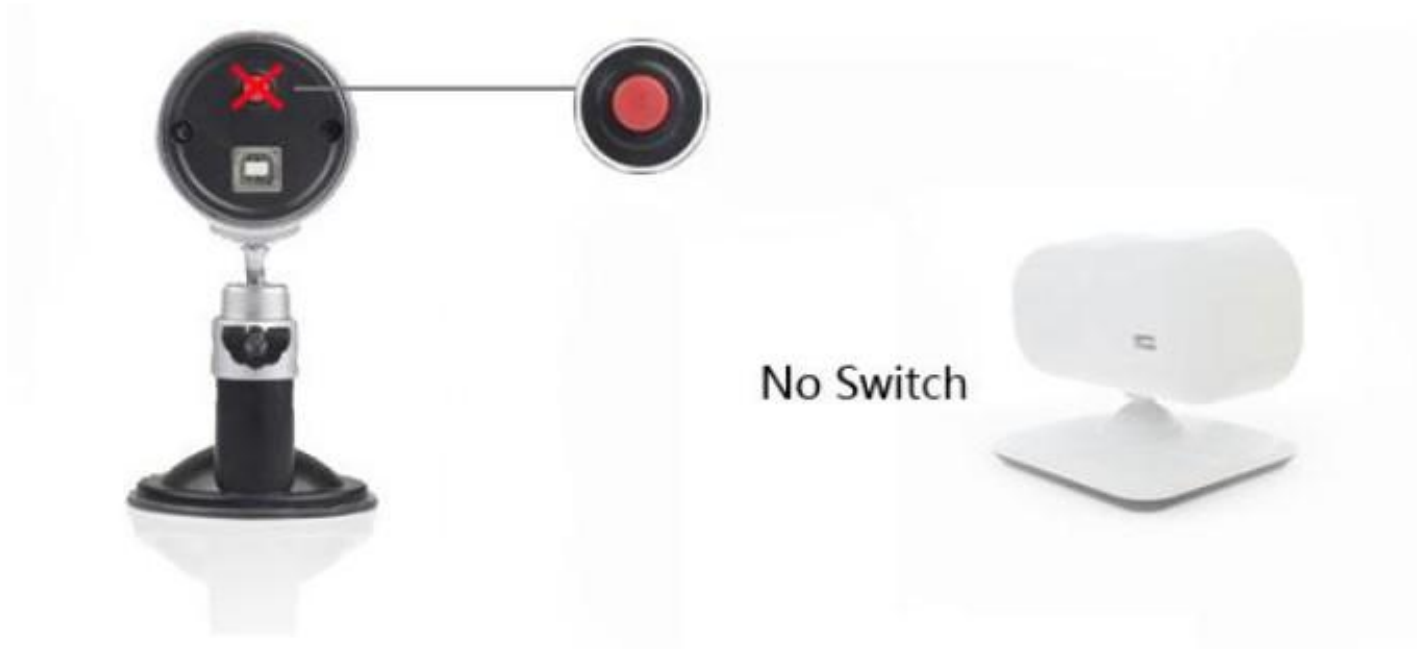
Flexible Fixing Base, Easy to Focus

Rotate the camera, you can get horizontal 360° and vertical 120° setting range.



No Need Laser Switch Anymore

After set the angle of signal receiver, calibration program will close laser switch automatically, so there's no need to operate it manually.



Added Flash Memory Chip

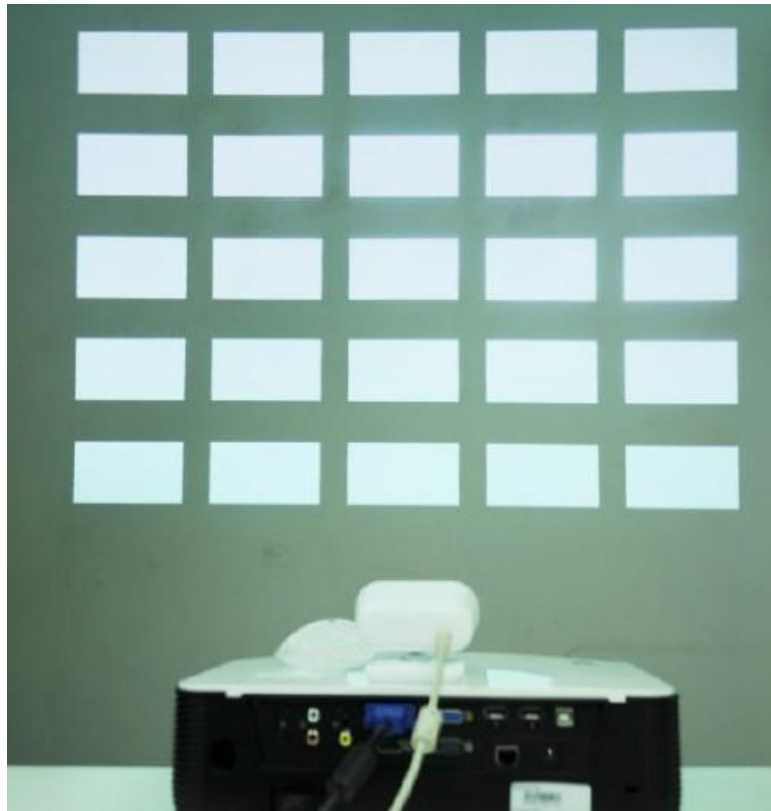
Firstly, response speed is getting extreme fast. Besides, the previous calibration data can be stored, even if you changed the connected PC, you don't have to calibrate again.



Auto-calibration, Flash Across

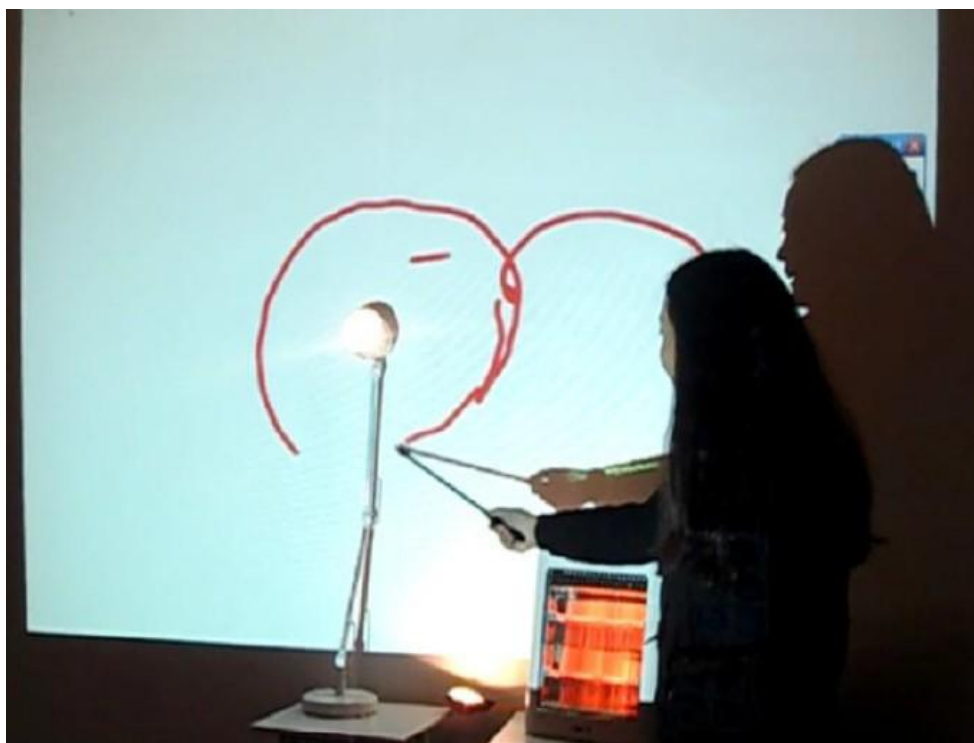
The original short throw portable IWB has to calibrate many points, it takes a long time.

Now we have auto-calibration function, it can be done by 2 seconds, which endows customers a more convenient user experience.

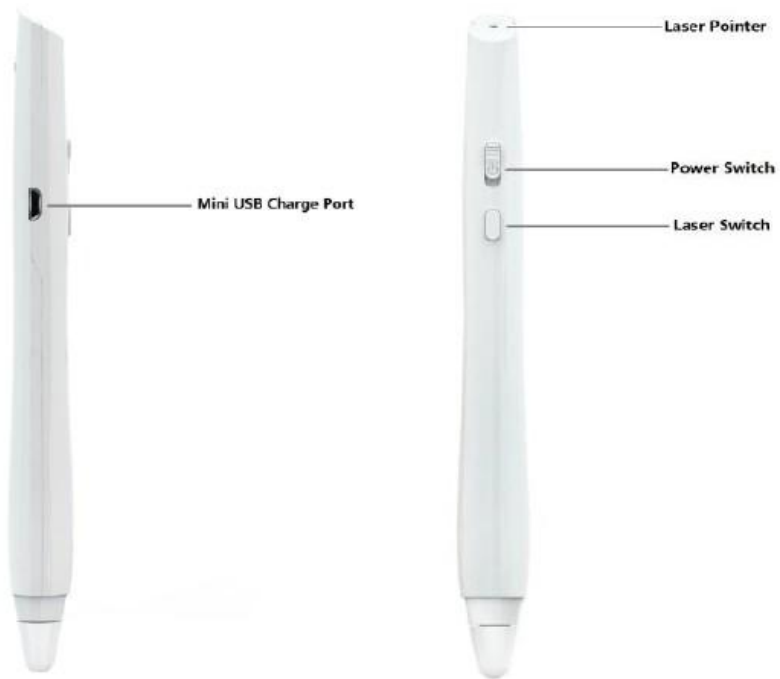


Anti-light Interference, More Stable Performance

Strong anti-light interference function, block the light from the same spectrum automatically, improved the products stability to a great extent.



Bundling with New Pen, to be No. 1



Combined with ergonomics, curved body design, makes your hand more comfortable when writing with it.



Remote laser writing, you could control your computer in a long distance



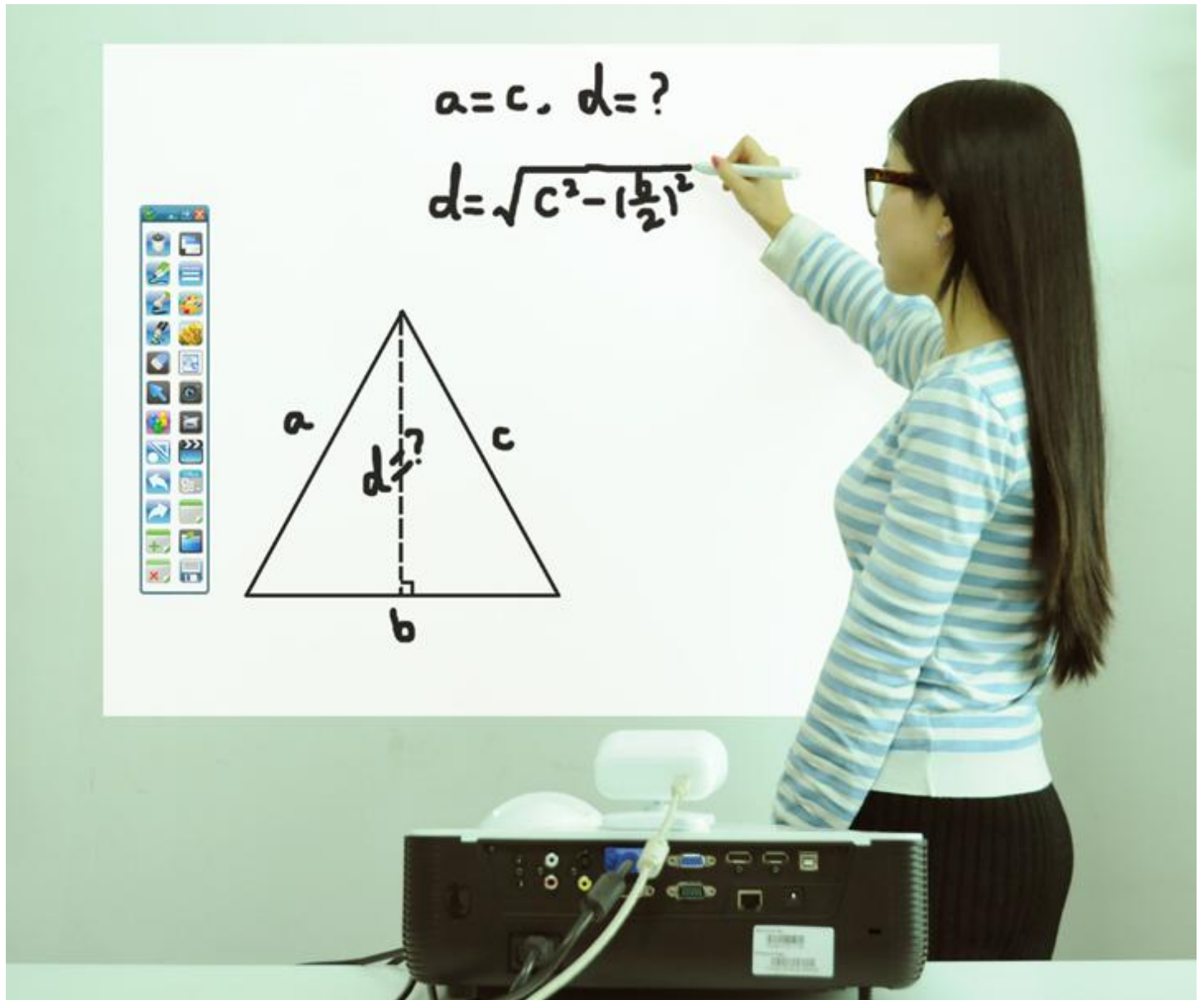
With lithium battery inside, it can be charged with USB cable



Specifications

| Signal Receiver | |
|-----------------------------------------|---------------------------------------------------------|
| Movement Detection Technology | infrared |
| Active Area(max projection size) | 90 inch diagonal |
| Active Area(horizontal angle) | +/-30 degrees |
| Active Area(vertical angle) | 0-120 degrees |
| Calibration Technology | Infrared Positioning |
| Active Distance(from projection screen) | 0.8-2m |
| Connectivity Interface | 1 x USB Cable (connection distance up to 24 m) |
| Power Requirement | 4.5 ~ 9 W (from USB port) |
| Power Consumption | <1.5 W |
| Weight | 72g |
| Magic pen | |
| Movement Detection Technology | LED light |
| Voltage | 5V |
| Electric quantity | 400MA/hour |
| Pen Body Dimension | 17cm(length) |
| Weight | 43g |
| Projection Size | Distance between Receiver and Projection Surface |
| Long Focus | |
| 80 inch | 197cm |
| 100 inch | 2.38m |
| 120 inch | 350cm |
| 150inch | 372cm |
| Short Focus | |
| 80 inch | 105cm |
| 100 inch | 140m |
| 120 inch | 178cm |
| 150inch | 195cm |

Application



About Hi-vista

Hi-vista is the most professional optic interactive projection products and solutions provider. With "Optoelectronics" as the main technology development direction, we are committed to develop and produce serial of interactive products.

Hi-vista can provides interactive education equipments and integrated solutions for education and training, advertisement design, business and government and etc. a rea.

Headquarter

2/F, Mu Building, Design Industry Park, No.3838, Nanshan Blvd., Nanshan District, Shenzhen City, Guangdong Province, China.

Tel: 0086-755-88290952

Fax: 0086-755-2334339

Email: market@hivista-optic.com

Web: www.hivista-optic.com